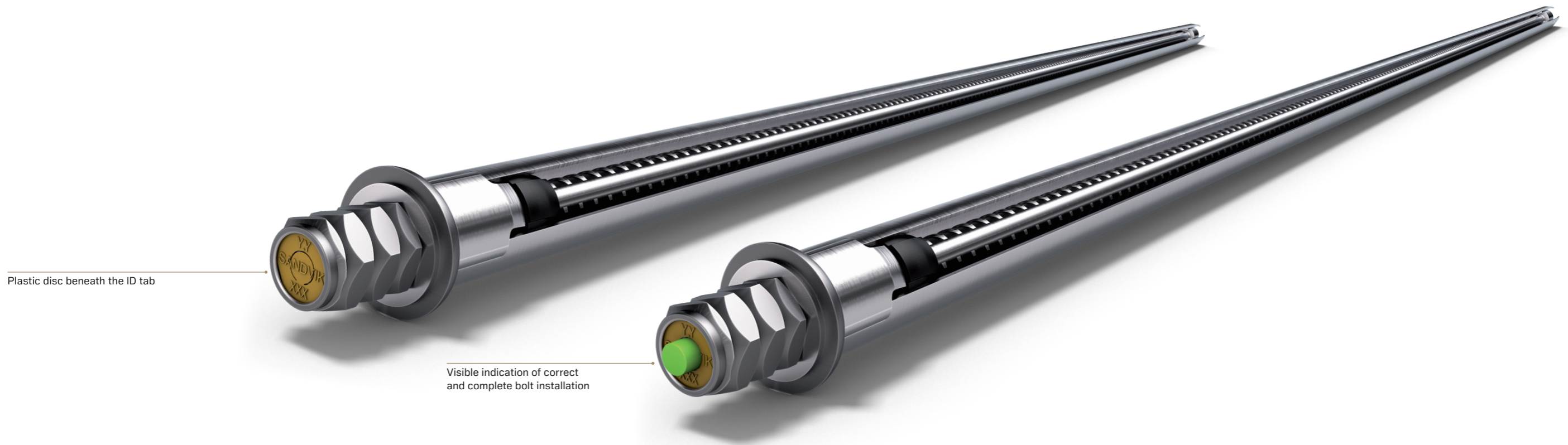


MD/MDX Peg Bolt



MD/MDX Peg Bolt: easy visual installation indication

Increased safety thanks to easy visible and lasting
indication of correct and complete bolt installation



D47 MD Peg Bolt



The D47 Mechanical Dynamic (MD) Peg Bolt is the newest addition to the MD/MDX Bolt product portfolio. A 47 mm friction bolt reinforced with a 20 mm bar and a wedge arrangement at the bolt top end, it now also provides easy visible and lasting indication of the correct and complete bolt installation. Once the bolt is fully driven into the hole (like the friction bolt), the nut at the bottom is rotated to actuate a set of wedges that firmly anchor the bolt top end in the rock.

The peg component is a plastic disc positioned within the nut, beneath the ID tab. When the bolt is rotated (left hand) to the required torque (350-450 Nm) the peg extrudes through the ID tab, being easily visible and remaining visible even after subsequent blasting cycles.

Features

- Easy visible and lasting indication of correct and complete bolt installation
- Good all purpose bolt useful for all conditions (including normal rock conditions)
- A productivity improving bolt with high static capacity
- Very simple bolt installation (similar to a standard friction bolt)
- No resins or grouts required, making it far easier to install, able to hammer straight in through wet and broken ground with no complications
- High friction anchorage capacity at the bolt top end
- Applicable to moving ground conditions
- High tensile and shear strength
- Rock plate secured to allow transfer of load to friction bolt and 20 mm bar
- The stopper safety device eliminates possible bar ejection
- The bottom of the tube is sealed to prevent atmospheric corrosion
- Low profile bolt head (no bar protrusion below the nut)
- Accessories can be screwed directly onto the installed bolts
- Compatible with the complete comprehensive portfolio of MD/MDX Bolt accessories
- Fully galvanized for corrosion protection
- Bolt installation quality apparent to operator
- These bolts are available in a range of sizes from 1.8 m, 2.1 m, 2.4 m and 3.0 m

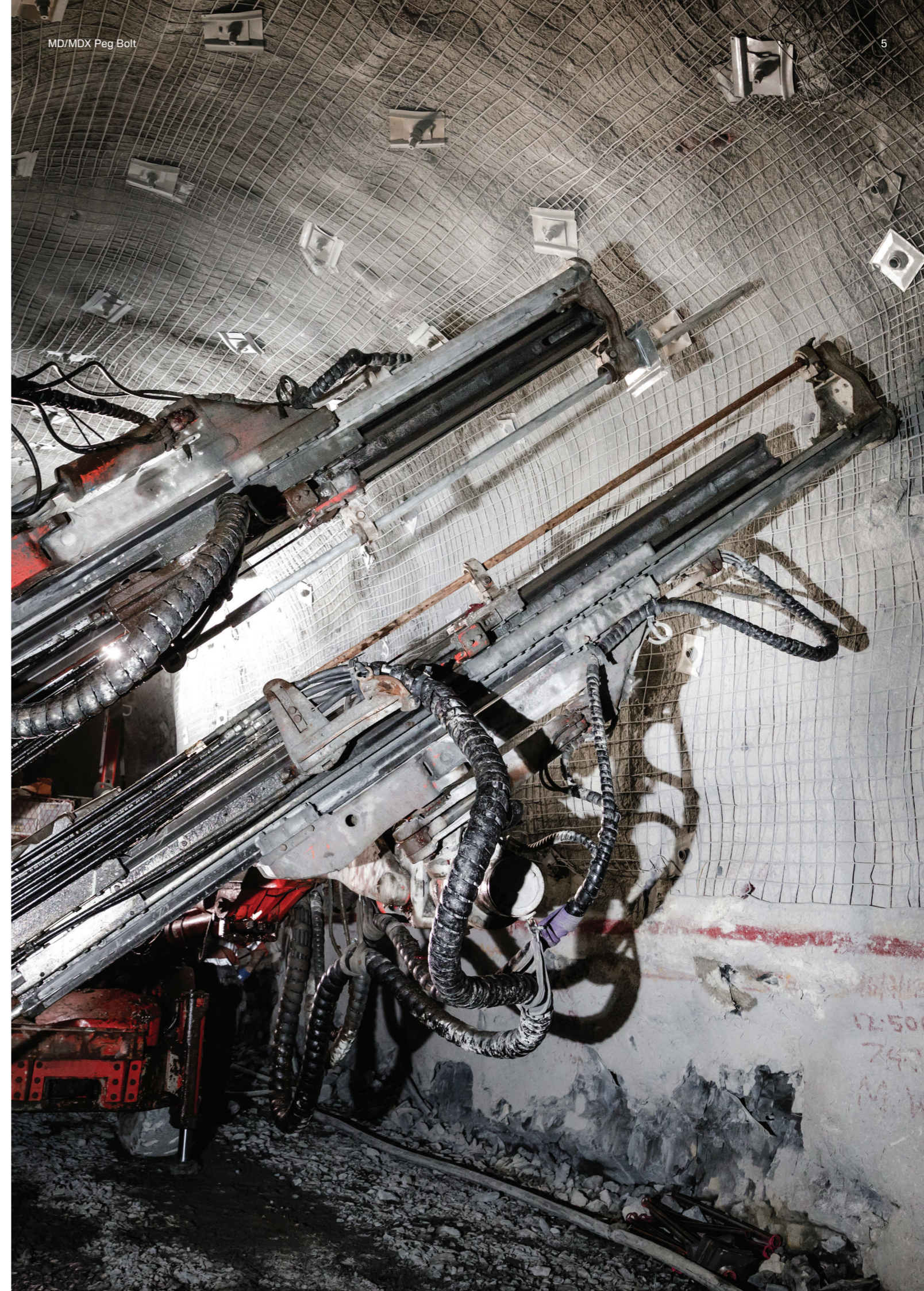
Component properties

| | |
|--------------------------------|-------------------------------|
| Bar diameter | Ø20 mm |
| Bar elongation (5d) | 22 % |
| Bar rolled thread | M22x2.5 LH |
| Bar ultimate tensile strength | 225 kN |
| Bar yield strength | 180 kN |
| Tube thickness | 3.0 mm |
| Tube ultimate tensile strength | 165 kN typical |
| Tube yield strength | 140 kN typical |
| Drill bit size | Ø43-45 mm |
| Bolt diameter | 47 mm |
| Bolt length | 1.8 m, 2.1 m, 2.4 m and 3.0 m |

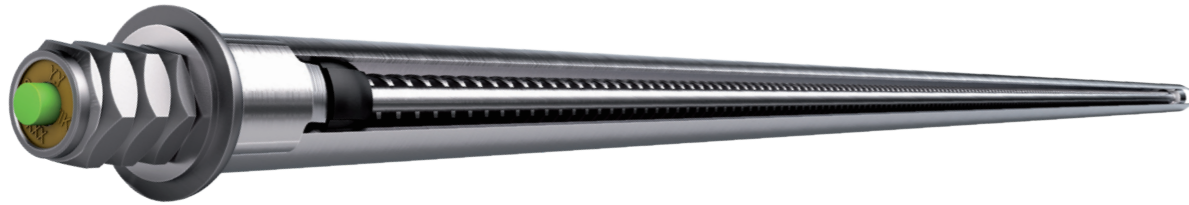
Bolt technical specifications

| Property | Minimum | Typical |
|-----------------------------|----------------|---------|
| Ultimate tensile strength | 280 kN | 300 kN |
| Shear strength (calculated) | 246 kN | 270 kN |
| Dynamic capacity | 19 kJ | 21 kJ |
| Dynamic displacement | 60 mm | 200 mm |
| | Maximum | |
| Wedge expansion | 52 mm | |

| Part number | Description | Weight |
|-------------|--|---------|
| BMGP2018S | 1.8 m long D47 MD Peg Bolt, galvanized | 10.2 kg |
| BMGP2021S | 2.1 m long D47 MD Peg Bolt, galvanized | 12.0 kg |
| BMGP2024S | 2.4 m long D47 MD Peg Bolt, galvanized | 13.2 kg |
| BMGP2030S | 3.0 m long D47 MD Peg Bolt, galvanized | 16.5 kg |



D47 MDX Peg Bolt



Designed and developed in Australia for underground hard rock mines. The D47 Mechanical Dynamic Extra (MDX) Peg Bolt has unparalleled “extra expansion” for extremely effective anchorage using the unique wedge design that is able to expand up to 60 mm. With the peg component it provides easy visual indication of the correct and complete bolt installation. When the bolt is rotated (left hand) to the required torque (350-450 Nm) the peg (a plastic disc positioned within the nut) extrudes through the ID tab, being easily visible and remaining visible even after subsequent blasting cycles.

The D47 MDX Peg Bolt is particularly suitable for seismic rock conditions and has been developed to provide strata support in a wide variety of rock conditions (weak and competent), and in particular seismic rock conditions.

Features

- Easy visible and lasting indication of correct and complete bolt installation
- A universal bolt suitable for broken, very weak, strong and seismic rock conditions
- A very quick and simple “one-pass” installation-same as the MD Bolt
- No resins or grouts required, making it far easier to install, able to hammer straight in through wet and broken ground with no complications
- Easily installed with standard jumbo tools
- Unique wedge design
- Unique yield design capable of absorbing very high dynamic loads
- High tensile and shear strength
- Fully galvanized for corrosion protection
- The stopper safety device arrests bar ejection
- The bottom of the tube is sealed to prevent atmospheric corrosion
- Low profile head, no protrusion below the nut
- Accessories can be screwed directly onto the installed bolts
- Compatible with the complete comprehensive portfolio of MD/MDX Bolt accessories
- Bolt installation quality apparent to operator
- These bolts are available in a range of sizes from 1.8 m, 2.1 m, 2.4 m and 3.0 m

Component properties

| | |
|---------------------|-------------------------------|
| Bar diameter | Ø20 mm |
| Bar elongation (5d) | 22 % |
| Bar rolled thread | M22x2.5 LH |
| Tube thickness | 2.5 mm |
| Drill bit size | Ø43-45 mm |
| Bolt diameter | 47 mm |
| Bolt length | 1.8 m, 2.1 m, 2.4 m and 3.0 m |

Bolt technical specifications

| Property | Minimum | Typical |
|-----------------------------|----------------|---------|
| Ultimate tensile strength | 205 kN | 225 kN |
| Yield strength | 155 kN | 180 kN |
| Shear strength (calculated) | 225 kN | 246 kN |
| Dynamic capacity | 28 kJ | 30 kJ |
| Dynamic displacement | 129 mm | 142 mm |
| | Maximum | |
| Wedge expansion | 60 mm | |

| Part number | Description (47 mm) | Weight |
|-------------|---|---------|
| BXGP4718 | 1.8 m long D47 MDX Peg Bolt, galvanized | 9.5 kg |
| BXGP4721 | 2.1 m long D47 MDX Peg Bolt, galvanized | 10.9 kg |
| BXGP4724 | 2.4 m long D47 MDX Peg Bolt, galvanized | 12.3 kg |
| BXGP4730 | 3.0 m long D47 MDX Peg Bolt, galvanized | 15.4 kg |

D39 MDX Peg Bolt



The D39 Mechanical Dynamic Extra (MDX) Peg Bolt has unparalleled “extra expansion” for extremely effective anchorage using the unique wedge design that is able to expand up to 47 mm, when drilled with 35-38 mm drill bits. The D39 MDX Peg Bolt is particularly suitable for seismic rock conditions and with the peg component it provides easy visual indication of the correct and complete bolt installation.

The Sandvik D39 MDX Peg Bolt has been developed to provide strata support in a wide variety of rock conditions (weak and competent), and in particular seismic rock conditions.

Features

- Easy visible and lasting indication of correct and complete bolt installation
- A universal bolt suitable for broken, very weak, strong and seismic rock conditions
- A very quick and simple “one-pass” installation
- No resins or grout required
- Installed with standard bolting equipment and tools
- Yielding design capable of absorbing high dynamic loads
- High tensile and shear strength
- Fully galvanized for corrosion protection
- The stopper safety device eliminates bar ejection
- The bottom of the tube is sealed to prevent atmospheric corrosion
- Low profile head, no protrusion below the nut
- Accessories can be screwed directly onto the installed bolts
- Compatible with the complete comprehensive portfolio of MD/MDX Bolt accessories
- Bolt installation quality apparent to operator
- These bolts are available in a range of lengths from 1.8 m, 2.1 m, 2.4 m and 3.0 m

Component properties

| | |
|---------------------|-------------------------------|
| Bar diameter | Ø20 mm |
| Bar elongation (5d) | 22 % |
| Bar rolled thread | M22x2.5 LH |
| Tube thickness | 2.3 mm |
| Drill bit size | Ø35-38 mm |
| Bolt diameter | 39 mm |
| Bolt length | 1.8 m, 2.1 m, 2.4 m and 3.0 m |

Bolt technical specifications

| Property | Minimum | Typical |
|-----------------------------|----------------|---------|
| Ultimate tensile strength | 205 kN | 225 kN |
| Yield strength | 155 kN | 180 kN |
| Shear strength (calculated) | 207 kN | 227 kN |
| Dynamic capacity | 24 kJ | 28 kJ |
| Dynamic displacement | 108 mm | 129 mm |
| | Maximum | |
| Wedge expansion | 47 mm | |

| Part number | Description (39 mm) | Weight |
|-------------|---|---------|
| BXGP3918 | 1.8 m long D39 MDX Peg Bolt, galvanized | 8.4 kg |
| BXGP3921 | 2.1 m long D39 MDX Peg Bolt, galvanized | 9.9 kg |
| BXGP3924 | 2.4 m long D39 MDX Peg Bolt, galvanized | 11.1 kg |
| BXGP3930 | 3.0 m long D39 MDX Peg Bolt, galvanized | 14.1 kg |

